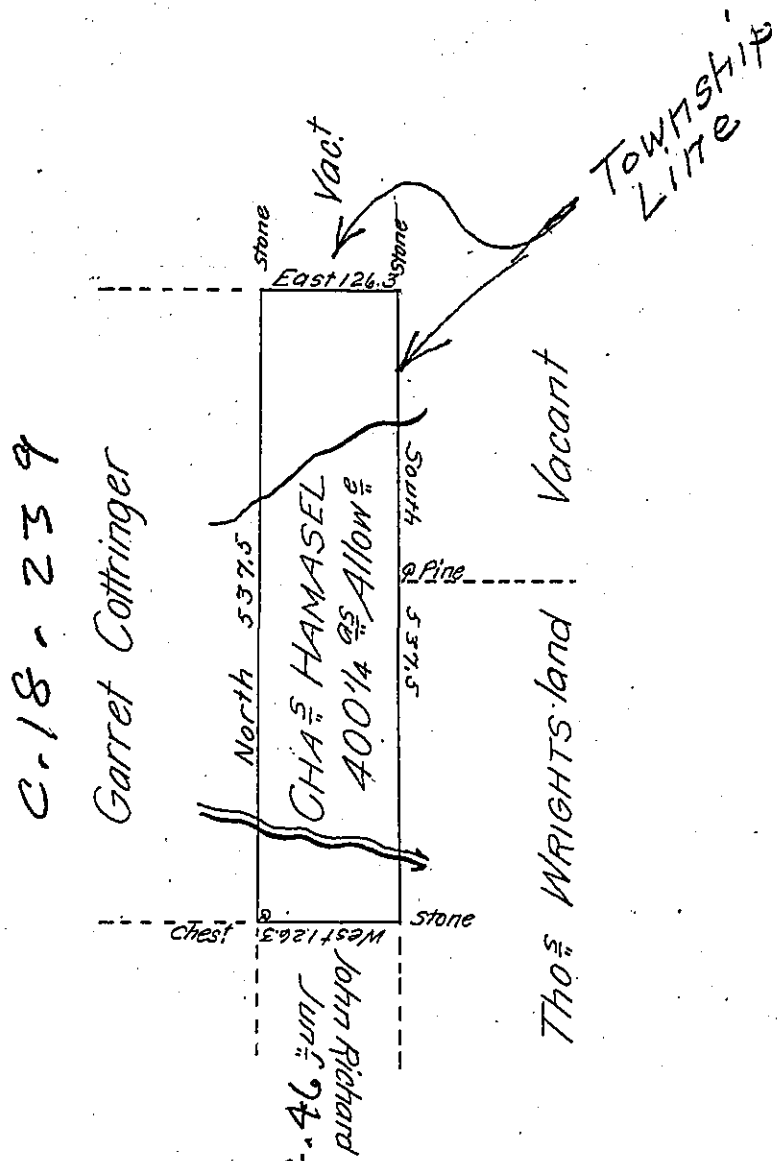


Derri son -
Luzerne.



Draft of a tract of land called Situate on the waters of Lehi joining land
 Surveyed for John Richard Jun^r and others in the County of Luzerne Containing
 four Hundred acres 1/4 & allowance of Six P Cent for roads &c. Surveyed for Char-
 les Hamasel the 3^d day of June 1792 in pursuance of a warrant dated the 4th Day
 of April 1792.

Daniel Brodhead Esq^r
 Surv^r Genl

by W^m Gray D.S.

IN TESTIMONY that the above is a copy of the original remaining on file in
 the Department of Internal Affairs of Pennsylvania, made
 conformably to an Act of Assembly approved the 16th day of
 February, 1833, I have hereunto set my Hand and caused
 the Seal of said Department to be affixed at Harrisburg,
 this eighteenth day of April 1905

Geo. R. ...
 Secretary of Internal Affairs.